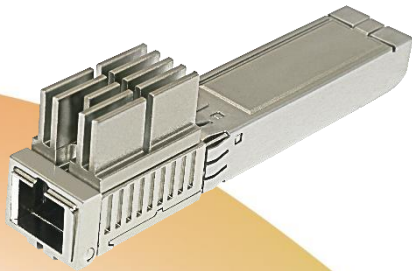


DATAKOM



DM987

XGS-PON ONUS

DATASHEET

DM987

ONU - Optical Network Unit

XGS-PON (Ten Gigabit Symmetrical Passive Optical Network) technology is an optical access solution that offers speeds of up to 10Gbps symmetrical, being a great cost-benefit for broadband applications and Triple Play services (voice, video and data). This technology allows the sharing of optical fiber between customers, reducing costs and maximizing the use of bandwidth and installed fibers.

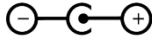
The DM987 family is a XGS-PON ONU model that is compatible with the ITU-T G.987.2 standards for high-speed fiber optic access applications. Ethernet data is transported transparently over the XGS-PON link and delivered to an optical line termination (OLT) unit.

The family is composed of the DM987 SFP and DM987-1010 models. The first is an SFP-format ONU that works on Bridge operation mode. The DM987-1010 is an ONU with a Gigabit Ethernet LAN interface and a 10 Gigabit Ethernet LAN interface, also with support for Bridge or Router operation mode, with integrated Optical Termination Point (OTP) on the bottom of the equipment, which facilitates the installation organization and protects the optical connector.

The DM987-1010 also has the remote management feature via the TR-069 protocol. With this feature, the ISP can manage all the routers installed in their subscribers through the cloud. TR-069 management allows the ISP to perform remote diagnostics and tests, reducing operational costs.

- XGS-PON ONUs
- DM987 SFP (Bridge)
- DM987-1010 – 1x 1GbE and 1x 10GbE
- Bridge or Router
- Integrated Optical Termination Point (OTP)
- TR-069

TECHNICAL SPECIFICATIONS

| | | DM987-SFP | DM987 - 1010 |
|------------------------|---------------------------|--|--|
| DIMENSIONS | Height | 8,6 mm | 40 mm |
| | Width | 13,9 mm | 150 mm |
| | Depth | 71,93 mm | 115 mm |
| HARDWARE | Integrated OTP | - | Yes |
| OPERATIONAL CONDITIONS | Temperature | 0°C to 70°C | 0°C to 45°C |
| | Humidity | 5% to 95%, uncondensed | 10% to 90%, uncondensed |
| POWER SUPPLY | Type | - | External |
| | Input | - | 100 Vac to 240 Vac, 50 ~ 60Hz |
| | Output | - | 12 Vdc, 1000mA |
| | Average Power Consumption | 3 W | < 15 W |
| | Polarity | - |  |
| GPON INTERFACE | Connector | 1x XGS-PON SC/ACP connector | 1x XGS-PON SC/APC connector |
| | Standard | According to ITU-T G.987.2 Laser according Laser safety standard IEC-60825 Class I | According to ITU-T G.987.2 Laser according Laser safety standard IEC-60825 Class I |
| | Upstream | 9.953 Gbit/s | 9.953 Gbit/s |
| | Downstream | 9.953 Gbit/s | 9.953 Gbit/s |
| | TX Power | +4dBm to +9dBm | +4dBm to +9dBm |
| | RX Sensibility | -28dBm | -28dBm |
| | Wavelength | TX: 1270nm RX: 1577nm | TX: 1270nm RX: 1577nm |
| LAN INTERFACES | LAN 10/100/1000 Base-T | - | 1 |
| | LAN 2.5/5/10G Base-T | - | 1 |
| | LAN SFP+ | 1 | - |
| SOFTWARE | Operating Mode | Bridge | Bridge / Router |
| | Routing | - | Multiple Wan Connections: - IPv4 Connection: PPPoE, IPoE (Static IP and DHCP) - IPv6 Connection: PPPoE, IPoE (Static IP, SLAAC, DHCPv6, Auto) - Bridged PPPoE and Transparent Bridge - IPv4/IPv6 Addressing - NAT - IPv4/IPv6 Static Routes - DNS Proxy, Static DNS, Dynamic DNS |
| | LAN Ethernet | Mac Address table: 512 | - MDI/MDIX - Virtual switch 802.1q - DHCP IPv4/IPv6 Server, Static IPv4/IPv6 - Mac Address table: 512 |
| | Security | - | - DMZ |

| | | | |
|----------|------------|--|---|
| | | | <ul style="list-style-type: none"> - MAC and por IP/Port filters - Port Forwarding, URL Blocking, IP Whitelist - UPnP, Loop Detection |
| SOFTWARE | Management | <ul style="list-style-type: none"> - Remote Management via OLT - Remote firmware upgrade via OLT - Provisioning by OMCI Protocol according to ITU-T G.987 | <ul style="list-style-type: none"> - Remote Management via OLT - Remote firmware upgrade via OLT or Web Interface - Provisioning by OMCI Protocol according to ITU-T G.987 - Access ACL via WAN/LAN interfaces - SNMP, Syslog Server - Ping IPv4 / IPv6, Traceroute IPv4 / IPv6 |

FRONT PANEL DM987 - 1010



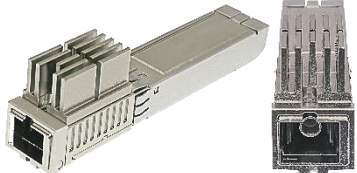
REAR PANEL DM987 - 1010




LOWER PART DM987-OTP



ORDERING INFORMATION

| Model | Description | Photo |
|-----------------------------------|---|---|
| DM987 – SFP <i>825.8036.xx</i> | ONU XGS-PON Bridge in SFP format, single-mode fiber, 1270nm, compatible with Digital Diagnostics, DFB laser, output power of +4.0 dbm and Sensitivity of -28 dbm. |  |

| Model | Description | Photo |
|------------------------------------|---|--|
| DM987 – 1010 <i>825.8027.xx</i> | ONU XGS-PON with integrated router, 1 LAN port 10/100/1000Base-T (RJ45) and 1 LAN port 1/10GBase-T (RJ45). Plastic enclosure with integrated OTP and external AC power supply with automatic selection. |  |

DATACOM

Rua América, 1000 | 92990-000 | Eldorado do Sul | RS | Brazil
+55 51 3933 3000
sales@datacom.com.br