

DM4270 FAMILY IP/MPLS 10GE and 100GE Switches



Standalone Ethernet IP/MPLS Switches based on the DmOS network operating system, with 10GE, 40GE and 100GE optical interfaces to enable enterprise aggregation, datacenter top of rack and core backbone applications.



Datacom Ethernet Switches consists of different product families that compose a complete ethernet portfolio for applications from access to core of the networking infrastructure. The product families are DM4000, DM4100, DM4050, DM4170, DM4250 and DM4270 as core and aggregation ethernet switches, DM2100, DM2300 and DM4370 as ethernet demarcation switches and DM1100E/DM1200E as enterprise LAN switches.



DM4270 Family

The DM4270 family of switches provides high switching capacity to meet the increasing demands of IP traffic aggregation in metro ethernet networks, high-capacity enterprise networks and top-of-rack datacenter applications, always providing high performance and reliability.

Based on the DmOS network operating system, the DM4270 switches ensure robustness and high availability services on a platform with support for

a number of L2, L3 and MPLS functionalities, among which stand out MPLS L2VPN and L3VPN applications support. All packet forwarding, ACL filtering and QoS policies are done in HW, ensuring wirespeed operation.

The switches have 1U height and are ready for 19 inches standard rack installation. Both models have two hot swappable slots for redundant AC or DC universal power source units, assuring high availability services and operation.

Key Features

- Wire Speed, with L2, L3 and MPLS forwarding, filtering and QoS done on hardware level
- IEEE802.1Q VLAN with Q-in-Q and VLAN Translate capabilities
- Link Aggregation and LACP
- Support for ring applications through EAPS or ERPS protocols
- STP/RSTP for loop protection
- L2 Slow Protocol Tunneling (L2CP)
- Static routing and dynamic routing through OSPF and BGP protocols
- Virtual IP redundancy through VRRP protocol
- Point-to-point and multipoint MPLS applications through VPWS and VPLS services
- Support for IP VPN services over MPLS (L3VPN)
- QoS functionalities like IEEE 802.1p, DSCP and Rate Limit
- TACACS and RADIUS for management access policies

DM4270 Family Models

DM4270 24XS+2CX

L2/L3 and MPLS switch with 24 optical SFP+ based 10GE interfaces and two configurable uplink options: two 100GE QSFP28 interfaces or four 40GE QSFP+ interfaces. The switch has also two slots for hot swap power supplies



DM4270 48XS+6CX

L2/L3 and MPLS switch with 48 optical SFP+ based 10GE interfaces, 6 optical QSFP28 based 100GE interfaces and two slots for hot swap power supplies



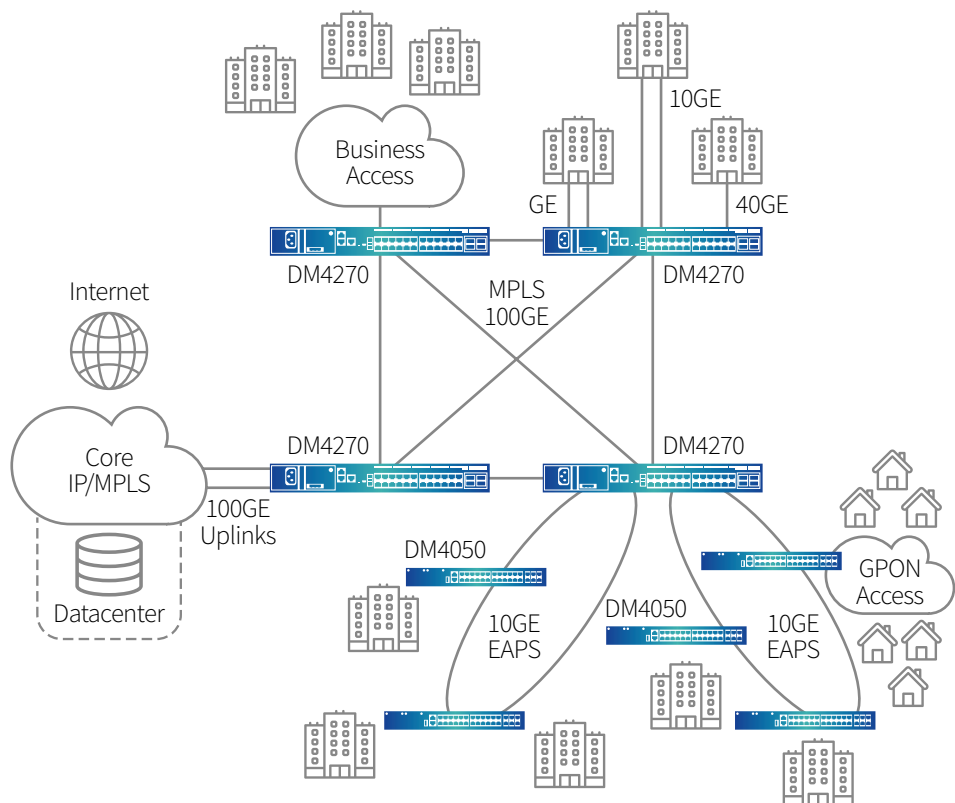
Hardware Characteristics

	DM4270 24XS+2CX	DM4270 48XS+6CX
10GE Interfaces	24	48
40GE/100GE Interfaces	2x 40GE/100GE or 4x 40GE	6x 40GE/100GE
Switch Fabric	Wirespeed – 880 Gbps	Wirespeed – 2,16 Tbps
Power Supply	Two redundant hot swappable slots for AC (100 - 240V) or DC (48 - 60V) PSUs	
Power Consumption	150W	250W
Management Interfaces	GE out-of-band, RS232 Console and USB	
Environmental	0 to 65°C Relative humidity 10% to 90%	0 to 55°C Relative humidity 10% to 90%
Dimensions (HxDxW)	44mm x 265mm x 444mm (482mm with brackets)	44mm x 400mm x 447mm (482 with brackets)

Application

METRO ETHERNET AGGREGATION

The DM4270 Ethernet Switches, through its 10GE, 40GE and 100GE optical interfaces and the complete support for L2 and IP/MPLS functionalities can address high capacity metro ethernet aggregation and core applications, offering a reliable and highly available solution for enterprise or residential IP services. The products support different network topologies like ring, linear or full mesh, allowing the network design that best fits the service requirements.





DATACOM

www.datacom.com.br

