

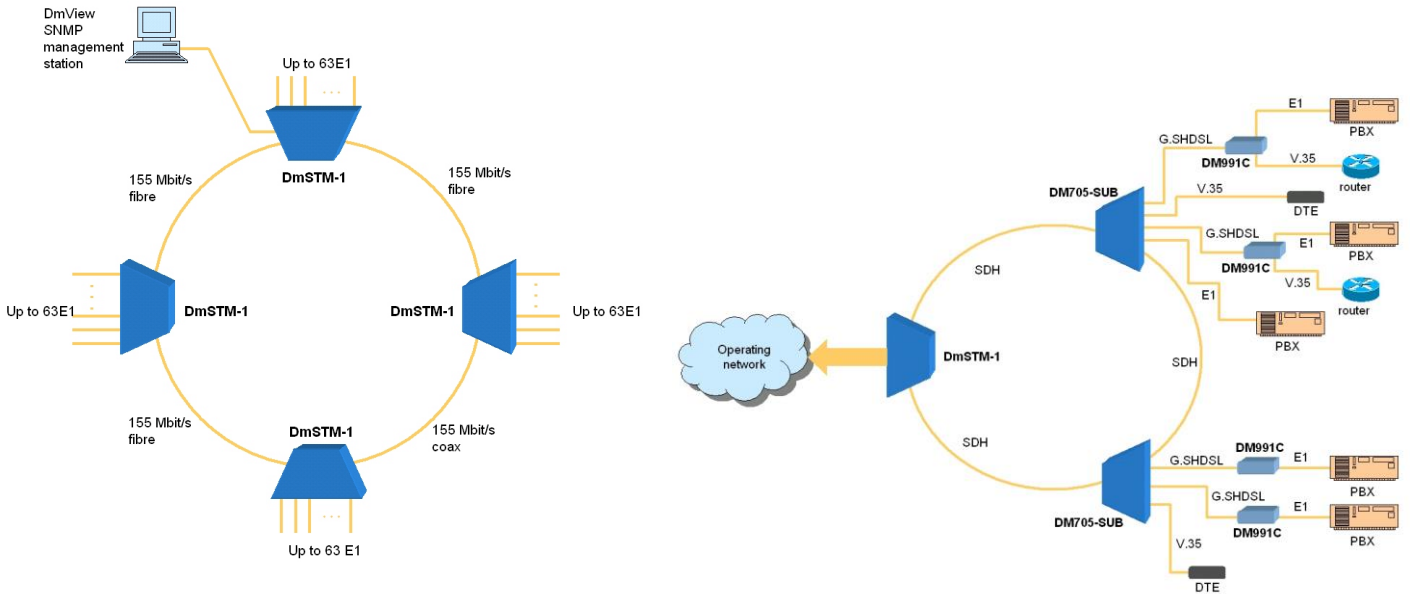
# DmSTM-1

## *New Generation SDH Multiplexer*



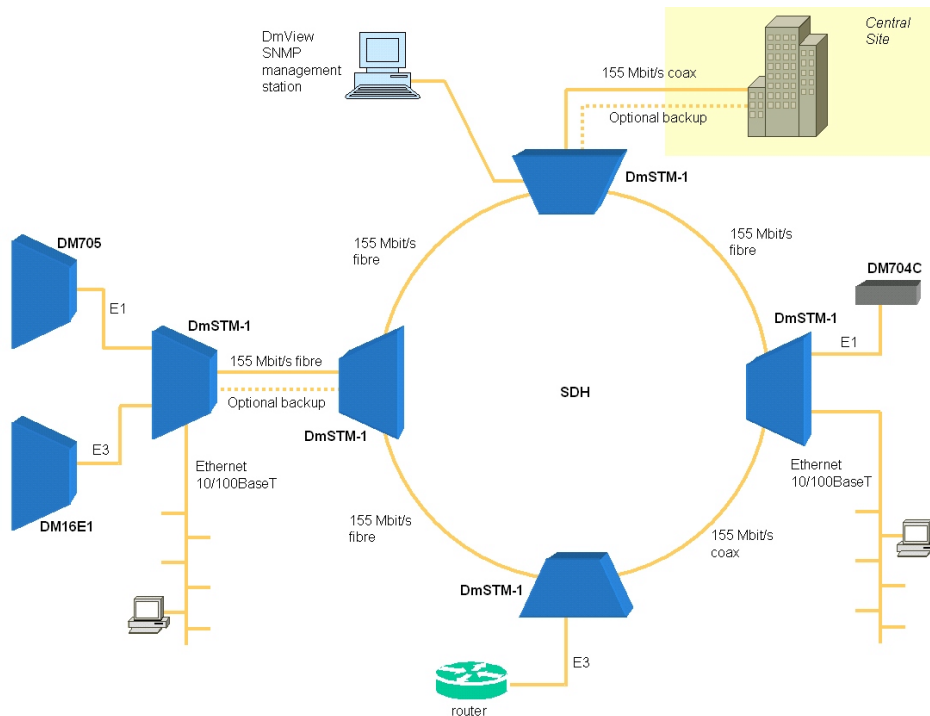
- Scalar and flexible
- Excellent cost-benefit and easy to install and configure
- Multiplex up to 63 2Mbit/s tributaries
- Terminal or ADM (add/drop) operation
- 1+1 MSP or SNCP protection schemes
- Full interworking with SDH equipments
- Flexible tributary mapping
- Tributary cards
  - 24x 2Mbit/s
  - 8x Ethernet (EoS - VCX, GFP, LCAS, VLAN)
  - 34/45 Mbit/s
  - STM-1 (155Mbit/s)
- All cards support hot-swap
- Built-in router, supports Frame-Relay or PPP protocols
- In-band management
- SNMP management – DmView
- Local or remote firmware upgrade
- Full-range power supply (AC/DC auto-sensing) with redundancy
- Compact design, allows installation in 19" rack, 2U height
- Cabling can be done entirely from rack front or back
- 2 G.703 2MHz clocks inputs and outputs
- 4 inputs and 2 outputs independent external alarms interfaces
- DCC can be mapped to a V.11 interface

# Applications



SDH ring

SDH ring with DmSTM-1 and DM705



SDH ring flexible configuration

## Technical Specifications

### Mechanical

- 2U height cabinet for 19" rack
- 2 slots for STM-1 aggregate interfaces
- 3 slots for tributary interfaces
- 2 slots for power supply unit
- Allows installation with frontal or rear cabling

### STM-1 Interfaces

- Optical STM-1 with many connector and range options, including bidirectional WDM
- Electrical STM-1 G.703 with CMI coding

Table 1 - Optical interface modules

Módulo de interface	Descrição	Tx [nm]	Potência mínima Tx	Sensibilidade	Alcance estimado	Opção ITU-T G.957
DmSTM-1 AG-MS13	Multimode	1310	-20dBm	-34dBm	~ 2Km	-
DmSTM-1 AG-SS13	Singlemode Two fibers short range	1310	-15dBm	-34dBm	~ 15Km	S1.1
DmSTM-1 AG-SS15	Singlemode Two fibers short range	1550	-15dBm	-34dBm	~ 18Km	S1.2
DmSTM-1 AG-SL13	Singlemode Two fibers long range	1310	-5dBm	-34dBm	~ 60Km	L1.1
DmSTM-1 AG-SL15	Singlemode Two fibers long range	1550	-5dBm	-34dBm	~ 80Km	L1.2
DmSTM-1 AG-SLx15	Singlemode Two fibers long range	1550	0dBm	-35dBm	~120Km	-
DmSTM-1 AG-SSB13 DmSTM-1 AG-SSB15	Singlemode Monofiber short range	1310 ou 1550 <sup>(1)</sup>	-14dBm	-31dBm	~ 14Km	-
DmSTM-1 AG-SLB13 DmSTM-1 AG-SLB15	Singlemode Monofiber long range	1310 ou 1550 <sup>(1)</sup>	-5dBm	-34dBm	~ 60Km	-

1) Transmissão 1310nm e recepção em 1550nm ou vice-versa

## ***Tributary Interfaces***

- Tributary card with eight 10/100 Mbit/s Ethernet ports. Performs Ethernet over SDH mapping with virtual concatenation, GPF encapsulation, LCAS and VLAN support.
- Tributary card with 24 2Mbit/s G.703 interfaces, 75Ω or 120Ω, available in two TELCO 50-pin connectors. The TELCO connector allows connection to the DID using twisted pair without any adaptor or patch panel. Equipped with three TR-24E1 tributary interface cards permits up to 63 2Mbit/s tributaries mapping. Tributaries are mapped in asynchronous mode in any TU-12/TUG-3
- Tributary card with electrical 34/45Mbit/s G.703 75Ω interface. Performs 34Mbit/s or 45Mbit/s mapping in the STM (VC-3) payload.
- Tributary card with electrical STM-1 G.703 75Ω interface or optical STM-1. Cross-connection of up to 3xVC-3 or 63xVC-12 to the aggregate interfaces (supports mixed VC-3/12 configuration).

## ***Protection options***

- Sub-Network Connection Protection (SNCP)
- 1+1 Multiplex Section Protection (MSP)

## ***Synchronism***

- Two input ports and two G.703 2MHz sync output ports
- Sync can be obtained from any aggregate port, tributary, external or internal

## ***External Alarms***

- Alarm externalization by dry contact in two independent outputs
- Four external alarm inputs

## ***Power Supply***

- Power supply with automatic AC (93 to 253V) and DC (36 to 72V) operation, redundancy (backup) capability and hot-swap support

<http://www.datacom-telematica.com.br>